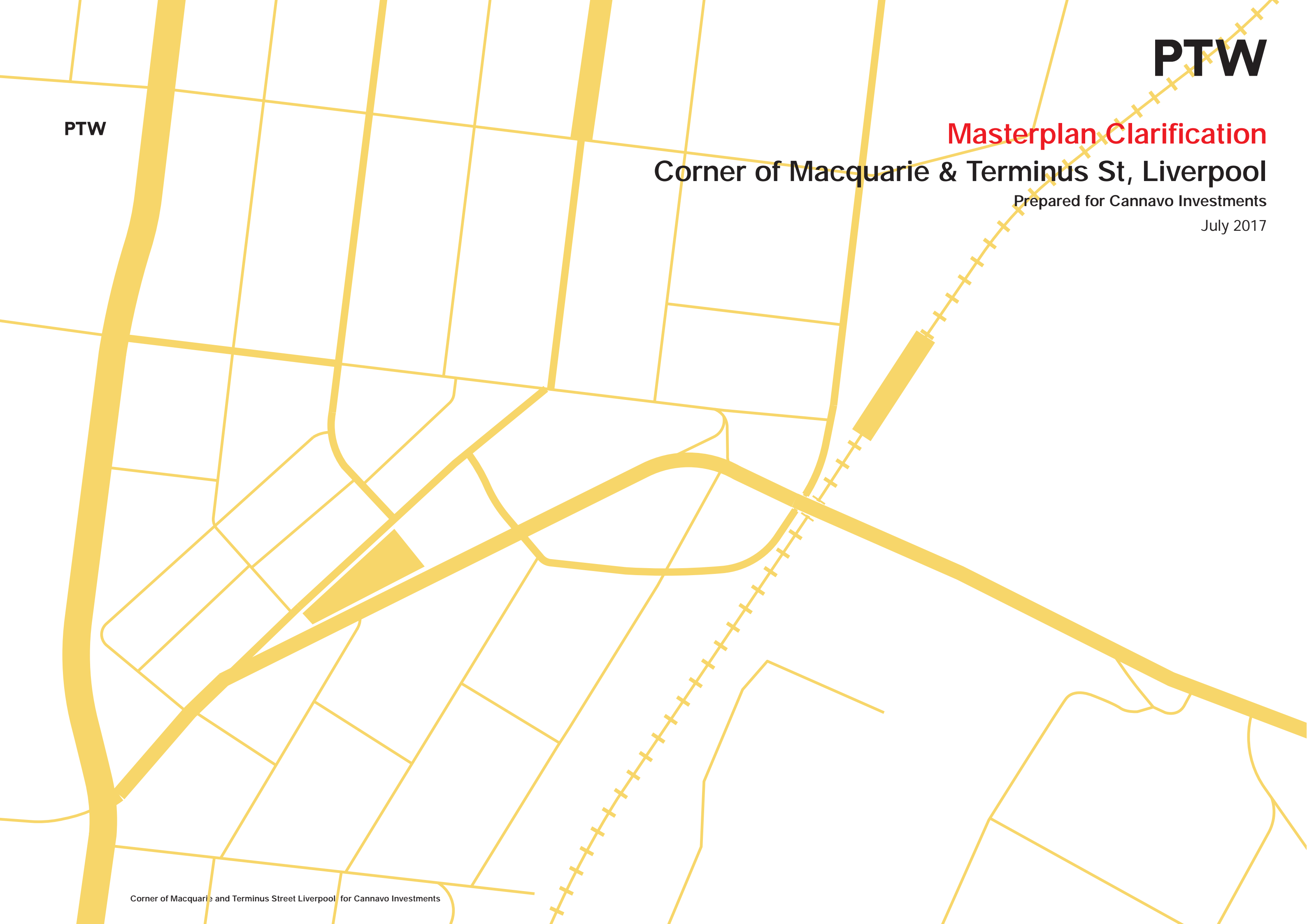


**Corner of Macquarie & Terminus St, Liverpool**

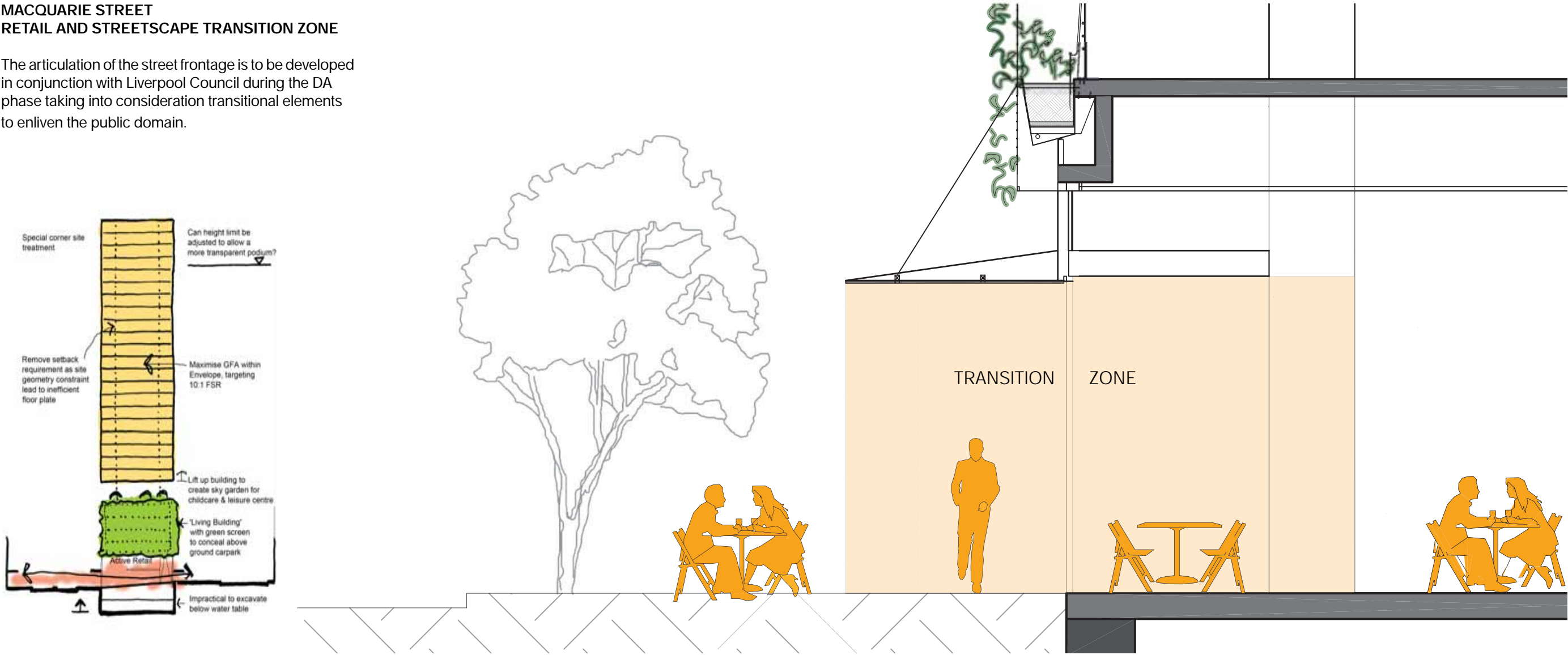
Prepared for Cannavo Investments

July 2017



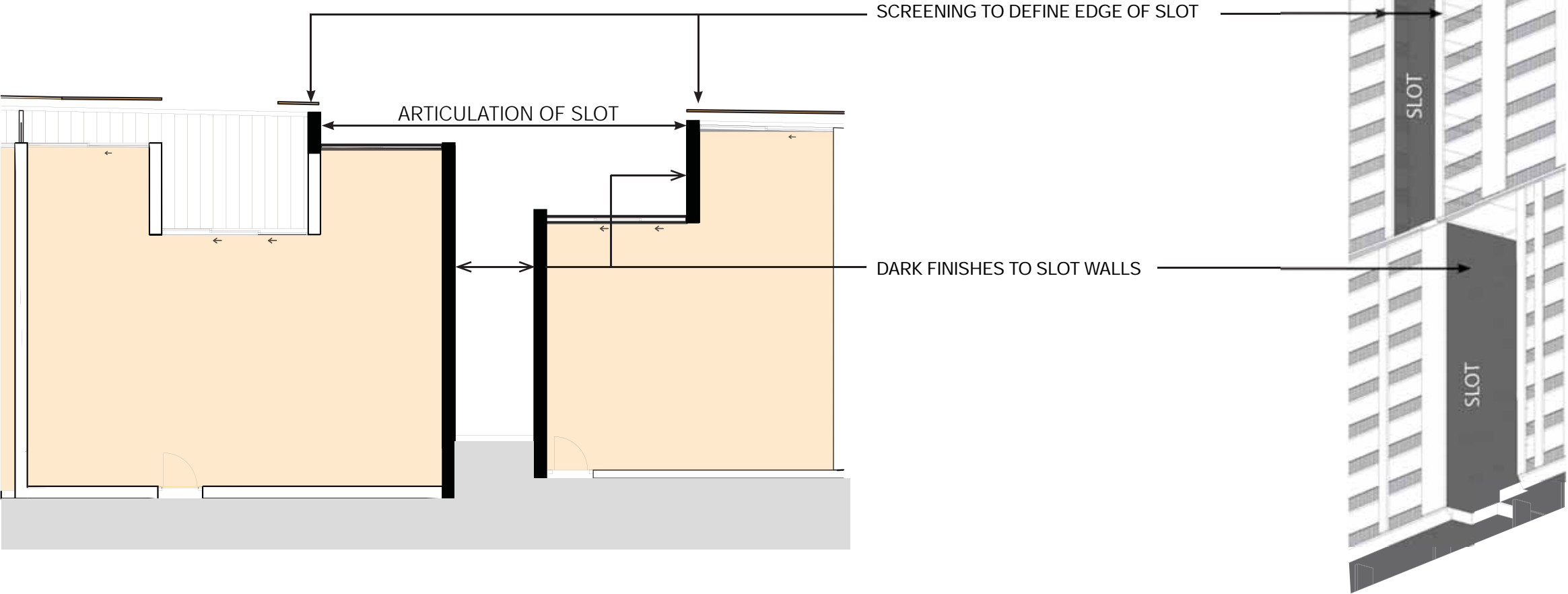
MACQUARIE STREET  
RETAIL AND STREETScape TRANSITION ZONE

The articulation of the street frontage is to be developed in conjunction with Liverpool Council during the DA phase taking into consideration transitional elements to enliven the public domain.



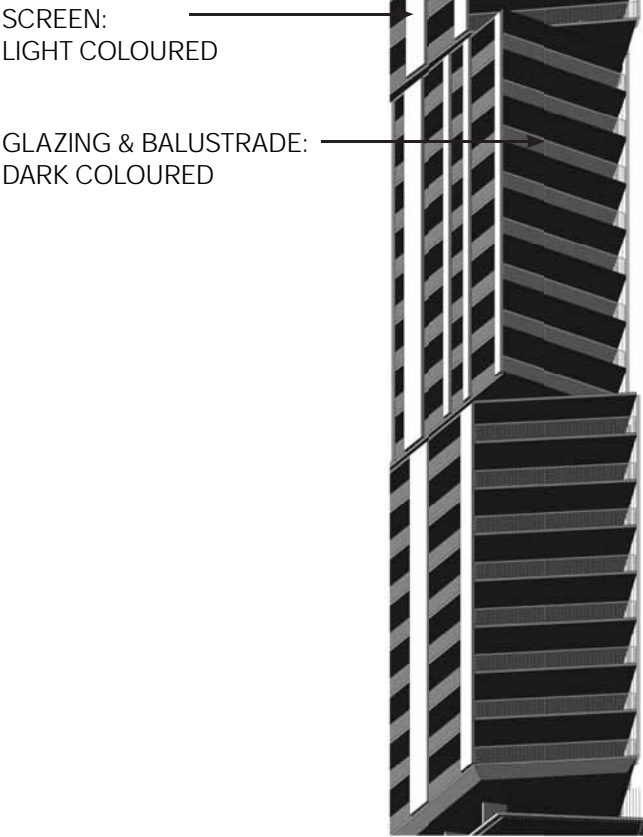
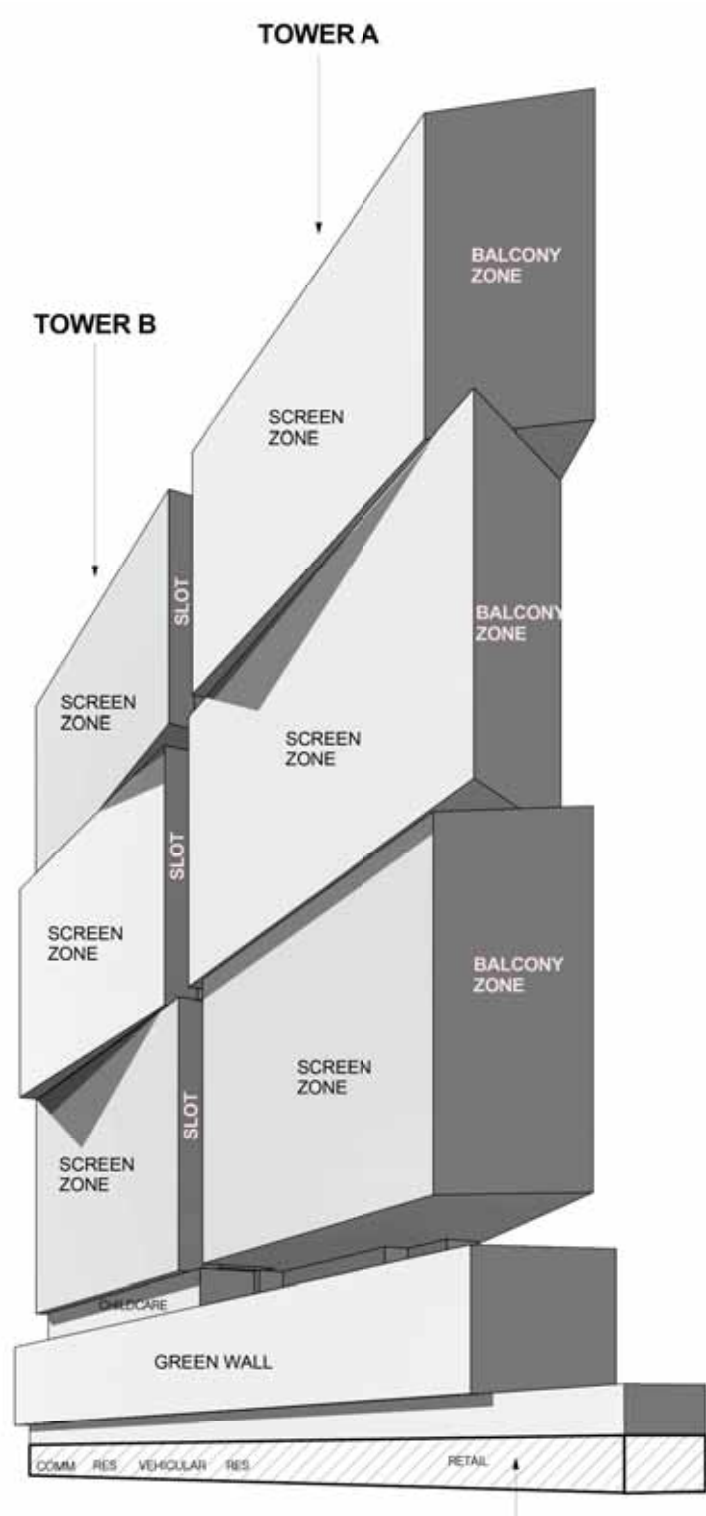
ARTICULATION OF SLOT

The building is split horizontally into three masses with shifting vertical slots. The slot is emphasised through the use of dark finishes and edged by white screening. This provides depth and hierarchy to the facade.



TIP OF THE BUILDING

The building is split horizontally into three masses with a shifting vertical slot. The depth of the slot is emphasised through the use of dark finishes and edged by screening.





PTW



PRECEDENT  
RETAIL AND STREETScape TRANSITION ZONE  
  
R9 BARANGAROO  
PTW



Corner of Macquarie and Terminus Street Liverpool, for Cannavo Investments



PTW



PRECEDENT  
RETAIL AND STREETScape TRANSITION ZONE  
  
PACIFIC BONDI  
PTW



PTW



PRECEDENT  
ARTICULATION OF SLOT

LUMIERE  
PTW Local Collaborating Architect



Corner of Macquarie and Terminus Street Liverpool, for Cannavo Investments





PRECEDENT  
ARTICULATION OF SLOT

ONE CENTRAL PARK  
PTW Local Collaborating Architect



Corner of Macquarie and Terminus Street Liverpool, for Cannavo Investments



PTW



PRECEDENT  
TIP OF THE BUILDING  
  
TIMES SQUARE NY





PTW



PRECEDENT  
TIP OF THE BUILDING  
  
LUNA APARTMENTS ST KILDA  
ELENBURG FRASER

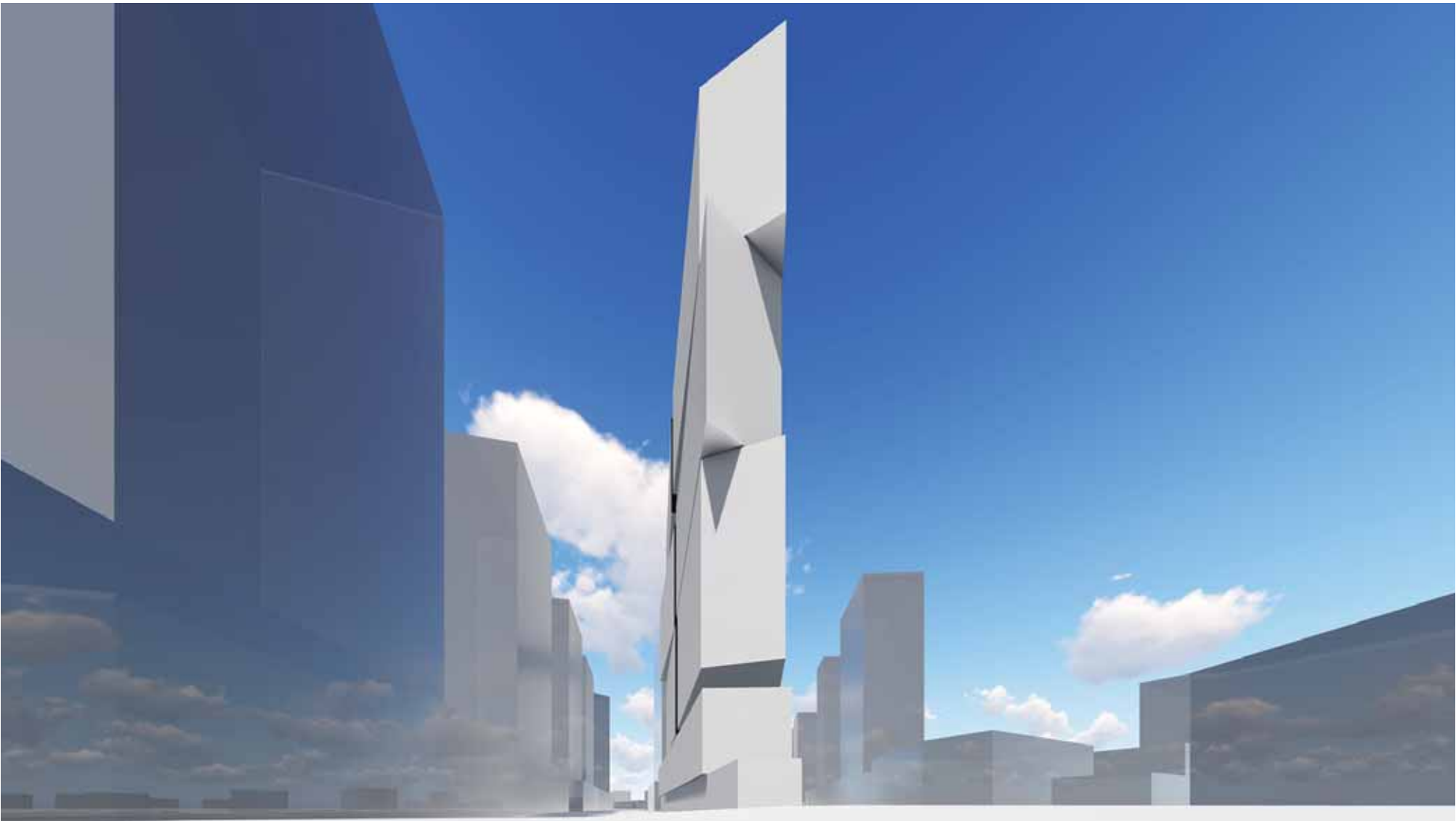




PTW

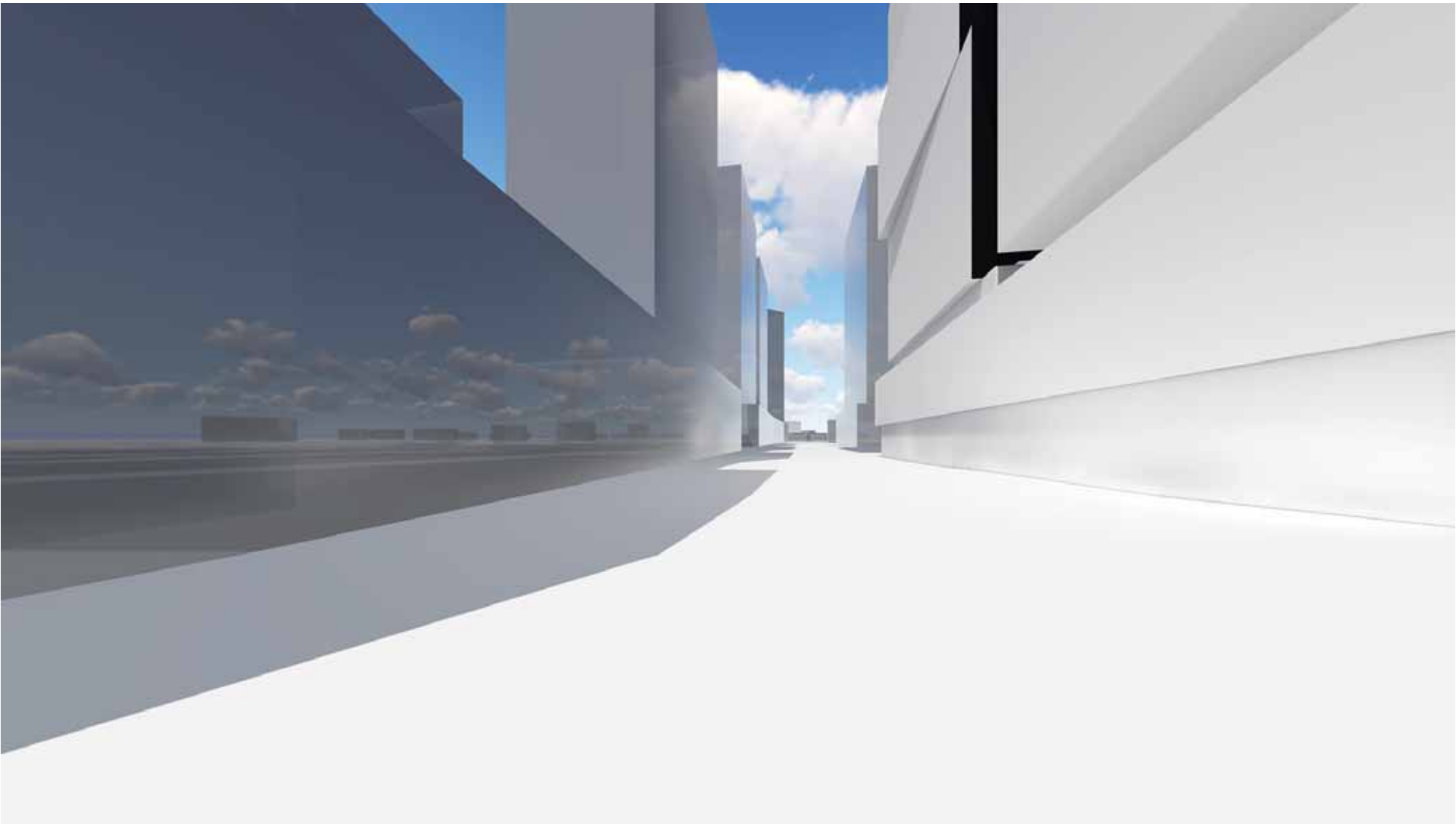


MACQUARIE & TERMINUS ST INTERSECTION  
TIP OF THE BUILDING



PTW

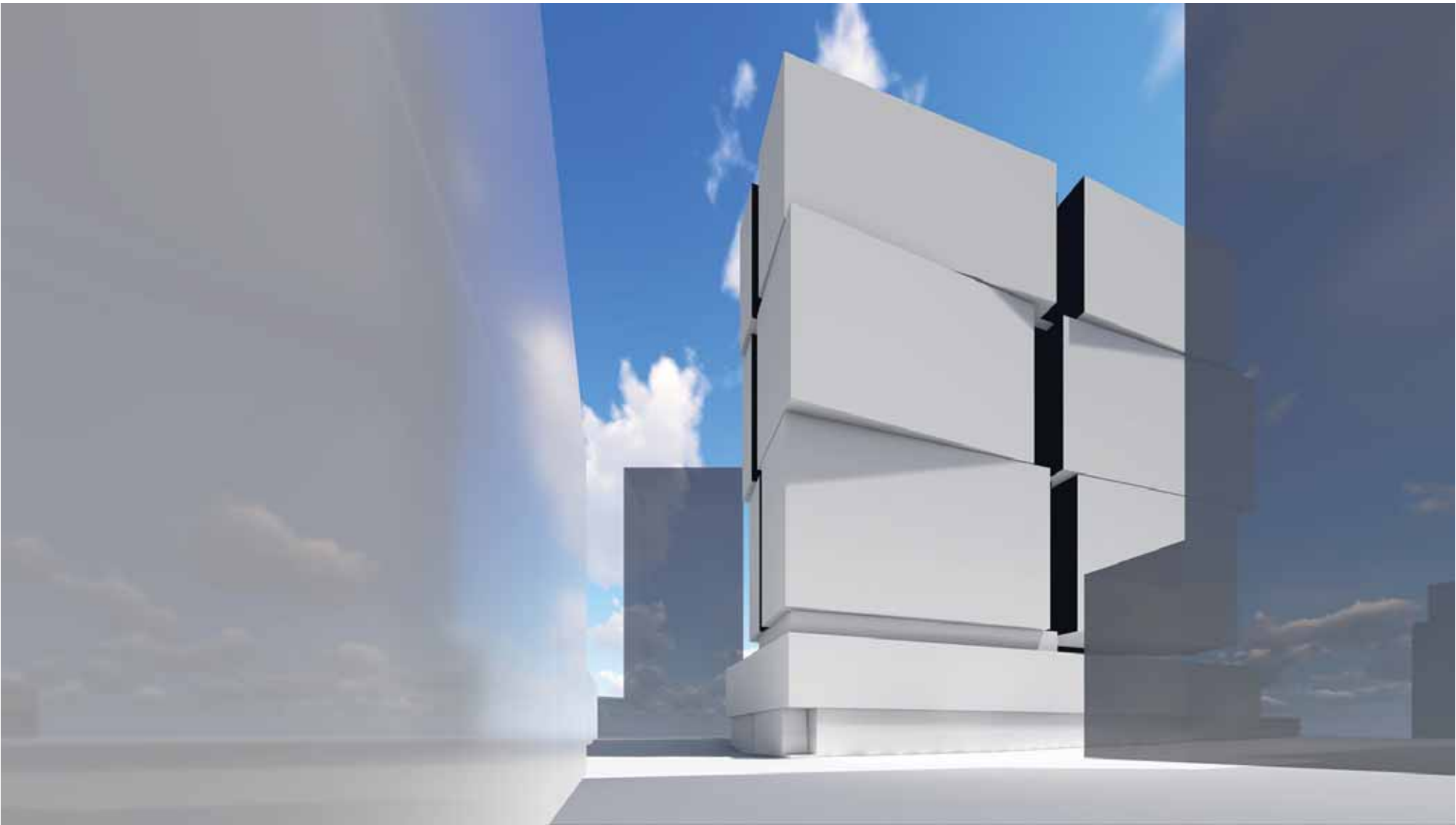
MACQUARIE ST  
STREET FRONTAGE





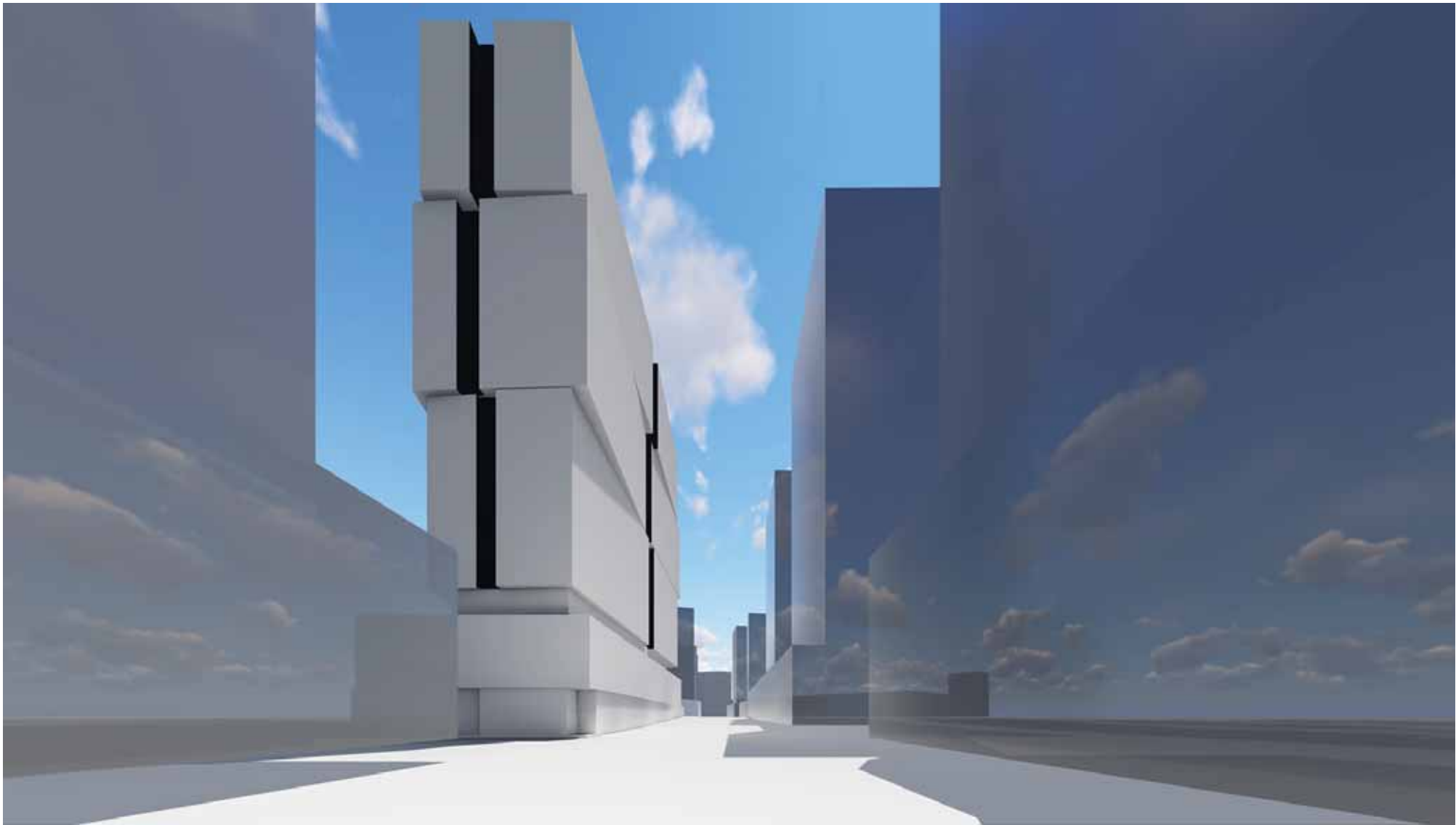
PTW

**BATHURST ST**  
STREET FRONTAGE



PTW

MACQUARIE ST  
STREET FRONTAGE





PTW

TERMINUS ST  
STREET FRONTAGE

